

1910 PINERIDGE DRIVE, INVERMERE

DISCOVER

Never Ending Views



LARGE FAMILY HOME FOR SALE



Come Home to the Columbia Valley

1910 PINERIDGE DRIVE

Where quality craftsmanship meets breathtaking views. This stunning 5-bedroom, 3-bathroom home sits in one of Invermere's most desirable neighbourhoods, offering privacy, comfort, and panoramic vistas of the Rocky Mountains and Columbia Valley –From Radium to Fairmont, with glimpses of Lake Windermere.


Thoughtfully designed with high-end finishes throughout, the home features maple hardwood flooring, vaulted alder ceilings with skylights, and large-format ceramic tile in the kitchen and baths. The gourmet kitchen includes stainless steel appliances and flows seamlessly into the open-concept top-floor living space, where oversized windows and an expansive deck invite you to soak in the spectacular scenery.

The spacious primary suite is a true retreat, complete with a walk-in closet and a luxurious 5-piece ensuite featuring his and her sinks, jetted soaker tub, and large tiled shower. Downstairs, you'll find heated floors in both the finished basement and oversized double garage.

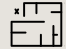
Outdoors, enjoy a fully fenced backyard oasis with a hot tub, garden, greenhouse, and shed—perfect for entertaining, relaxing, or growing your own produce. The home is non-strata, giving you the freedom and flexibility to make it your own. Ideally located near biking trails, parks, pickleball courts, and schools, and just minutes to downtown Invermere, Kinsmen Beach, Panorama Mountain, and world-class golf courses.

Experience the perfect blend of luxury, comfort, and adventure—right from your doorstep.

 5 BED

 3 BATH

 2 LEVELS

 3,284
SQFT





HARDWOOD FLOORING



VAULTED CEILINGS



STAINLESS STEEL APPLIANCES



SKYLIGHTS



LARGE DECK



OVERSIZED WINDOWS



JETTED SOAKER TUB



WALK-IN CLOSET



ENSUITE



HIS AND HER SINKS



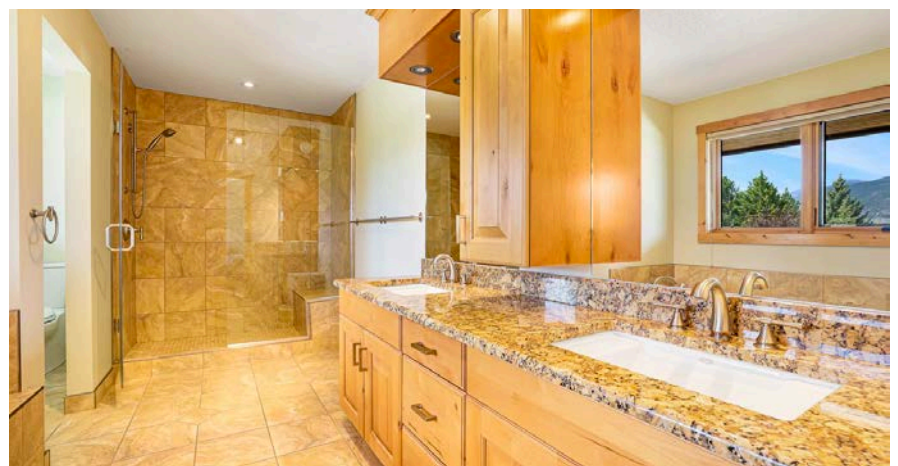
HEATED FLOORING



DOUBLE CAR GARAGE

Indoor Features

1910 PINERIDGE DRIVE



Outdoor Features

1910 PINERIDGE DRIVE



FIREPIT



GREENHOUSE



HOT TUB



GARDEN BEDS



MOUNTAIN VIEWS



OUTDOOR SHED



FENCED YARD



NON-STRATA LOT



CLOSE TO
PLAYGROUND



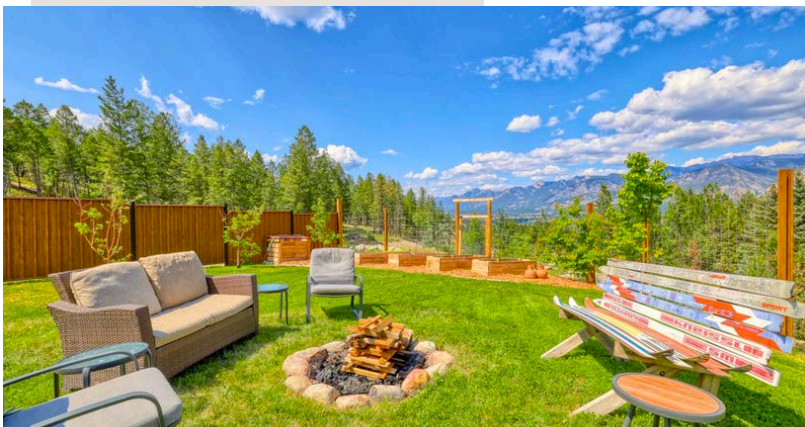
CLOSE TO
SCHOOLS

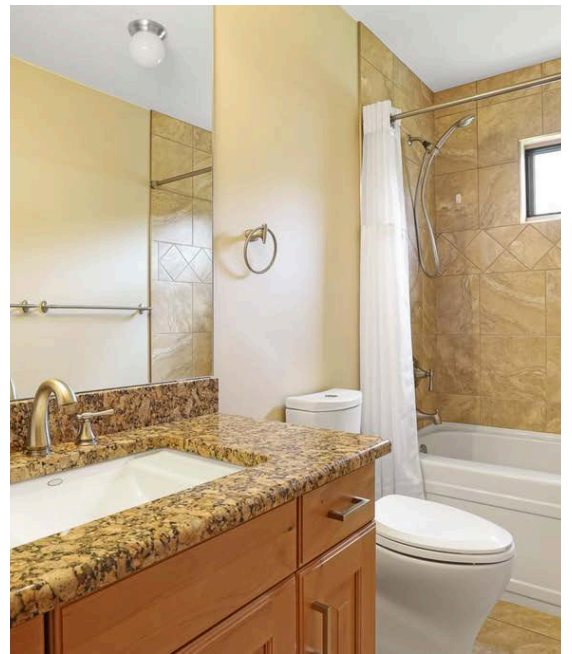


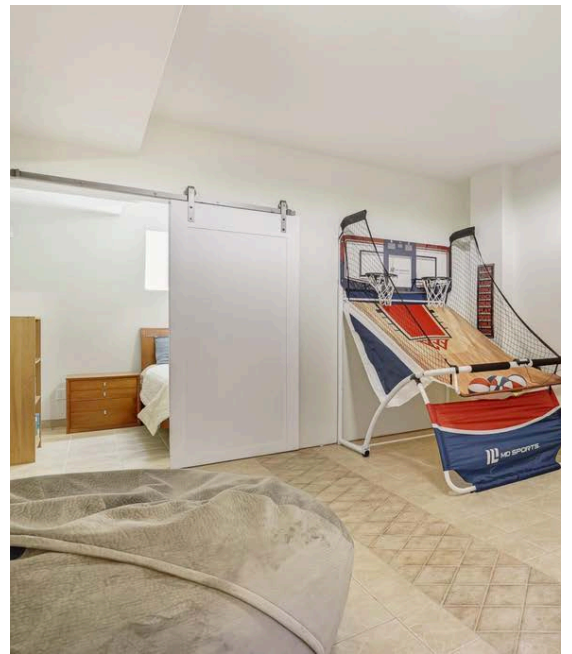
CLOSE TO
PICKLEBALL/TEN
NIS COURTS



CLOSE TO
OUTDOOR TRAILS









JENNA MINNAAR
BROKER/OWNER



JENNA@REMAXINVERMERE.COM
250-341-7911
WWW.REMAXINVERMERE.COM

